

Enhancing the practice of primary care physicians as our goal to serve  
the medical profession and the Society



THE UNIVERSITY OF HONG KONG  
LI KA SHING FACULTY OF MEDICINE

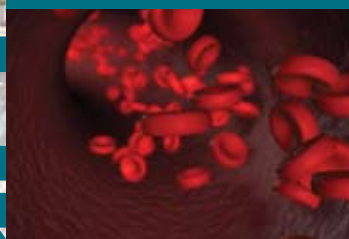
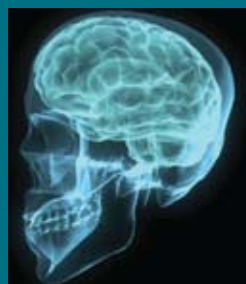
香港大學李嘉誠醫學院

# Postgraduate Diploma in Diagnosis and Therapeutics in Internal Medicine

## (PDipIntMed&Therapeutics)

### 醫學內科診斷及治療深造文憑

*A Quotable Qualification by  
The Hong Kong Medical Council*



*Call for Application  
for Admission  
in September 2011*

**DEADLINE OF APPLICATION**

**31 August 2011**

Diagnosis  
Therapeutics  
Internal Medicine

## Program Design

The Postgraduate Diploma in Diagnosis and Therapeutics in Internal Medicine (PDipIntMed&Therapeutics) aims at enhancing the knowledge and skills of primary care doctors on diagnosis and treatment of common medical conditions with an emphasis on therapeutics and long term follow up in primary care setting. By presenting information on internal medicine that is practical, concise and relevant, the course highlights new approaches and directions for patient management. It utilizes whole class lectures, interactive workshops, case-based presentations and discussions; prescribed self-learning reading and multimedia video; and practical clinical attachments. It will also provide a good opportunity for participants to interface and liaise with different specialists in internal medicine.

## COURSE STRUCTURE

The program will be delivered through modules of academic study covering major specialties in internal medicine. It is a 2-year part-time course with 12 modules of academic study taught consecutively, each comprising three 4-hour sessions of lecture and workshop to be completed in one weekend (Saturday: 2:30pm to 7:00pm & Sunday: 9:00am to 6:30pm) at the LKS Faculty of Medicine; plus 2 hours of small-group clinical attachment at Queen Mary Hospital, Hong Kong West Cluster Hospitals of HA or other affiliated sites. They are usually conducted on a weekday, depending on the activities of the Divisions. English will be the medium of instruction.

## ADMISSION REQUIREMENTS

Applicants must hold a degree of MBBS of The University of Hong Kong, or an equivalent qualification from another university, and possesses post-registration experience of not less than 12 months. Applicants are expected to possess access to the internet and an adequate command of English and computing skills. Any and all offers of admission will be subject to the final decision of the Organizer.

## PROGRAM ASSESSMENT

Annual MCQ assessment - 6 modules per assessment (50% weighting) - passing mark 50%; clinical attachment assessment (20% weighting); and a case report or literature review / project / dissertation of between 3,000 to 3,500 words on an approved topic of one of the 12 modules (30% weighting). Written assessment will be conducted at the end of each academic year.

Occasional students undertaking individual modules as stand alone CME courses are not required to take the program assessment.

## REQUIREMENTS FOR AWARDING OF DIPLOMA

Completion of all 12 modules with at least 80% attendance of lectures and 70% attendance of clinical attachment within a 2-year period; satisfactory performance (at least 60% score) at the overall assessment exercises; and submission of a satisfactory case report or literature review / project / dissertation.

A postgraduate diploma will be issued by the University of Hong Kong, upon meeting the above requirements. A certificate of attendance will be issued to occasional students undertaking individual modules as stand alone CME courses.

## IMPLEMENTATION DATE

The program will have 1 intake per year usually in September. And the deadline of applications for 2011-2013 will be 31 August, 2011.

## PROGRAM FEES

Composition fee for the 2 year program is HKD23,000 (subject to approval), payable on an annual basis in two equal installments and HKD2,500 per module as stand alone CME courses for occasional students.

## VENUE

William MW Mong Block, Faculty of Medicine Building, 21 Sassoon Road, Pok Fu Lam, Hong Kong

## PROFESSIONAL ACCREDITATION

Approved by Medical Council as quotable qualification  
CME accreditations:

College / Program	Diploma	Certificate course – per module (Saturday)	Certificate course – per module (Sunday)	Category
Hong Kong College of Anaesthesiologists	15		12	Non-ana
Hong Kong College of Community Medicine	Max. 10		10	
College of Dental Surgeons of Hong Kong	5 points per year	–	–	PG
Hong Kong College of Emergency Medicine	12	–	–	
Hong Kong College of Family Physicians	50 points (CME) – attendance + 10 points (CPD) – if passed all exams	3-5	5	5.2 3.14
Hong Kong College of Obstetricians and Gynaecologists	Pending	Pending		
College of Ophthalmologists of Hong Kong	Max. 4	2	4	Passive (Max. 4 points)
Hong Kong College of Otorhinolaryngologists	10		6	Cat 2.2
Hong Kong College of Paediatricians	18		9	Cat E
Hong Kong College of Pathologists	30		9	PP
Hong Kong College of Physicians	–	2-5	2-5	
Hong Kong College of Radiologists	Max. 30	4	8	Cat B
College of Surgeons of Hong Kong	18		5	Passive
MCHK CME for non-specialists (Department of Health, Hong Kong Academy of Medicine, Hong Kong Doctors Union and Hong Kong Medical Association)	144	4	8	

## ORGANIZER

Department of Medicine  
The University of Hong Kong, Queen Mary Hospital,  
Hong Kong

## BOARD OF STUDIES

Chairman: Prof Karen SL Lam  
Course Co-ordinator: Dr Sydney CW Tang

## MEMBERS

Dean of Faculty of Medicine  
Prof RTP Poon (Representative, Chairman of Faculty of Higher Degrees Committee)  
Prof WK Lam  
Prof CL Lai  
Prof Kathryn Tan

## MODULE DIRECTORS

Dr David Siu (Cardiology)  
Prof Bernard Cheung (Clinical Pharmacology)  
Dr CK Yeung (Dermatology)  
Prof Kathryn Tan (Endocrinology and Diabetes)  
Prof LW Chu (Geriatrics)  
Prof YL Kwong (Haematology)  
Prof MF Yuen (Gastroenterology and Hepatology)  
Dr Ivan Hung (Infectious Diseases)  
Prof CS Chim (Medical Oncology)  
Prof TM Chan (Nephrology)  
Prof SL Ho (Neurology)  
Prof Mary Ip (Respiratory Medicine)  
Dr Temy Mok (Rheumatology)

## INTERNAL ADVISOR

Prof CR Kumana

## EXTERNAL ADVISOR

Prof James D Best  
School of Medicine, University of Melbourne  
Carlton, Australia

## PROVISIONAL PROGRAM FOR 2010-2012

### Respiratory Medicine

10 – 11 September 2011

Topics
Clinical updates 1
Influenza & pneumonia
Tuberculosis: practical issues
Workshop: chest imaging
Clinical updates 2
Practical approach to treatment of asthma
COPD: clinical guidelines and daily practice
Workshop: spirometry, skin tests, inhaler devices, oxygen therapy, NIPPV
Diagnostic approach in suspected lung cancer
Recent advances in treatment of lung cancer
Practical approach to obstructive sleep apnoea
Interactive case work-up: a series of cases to brush up your diagnostic skills (chemical pathology, radiology, polysomnogram)

*Clinical Attachment: Visits to fiberoptic bronchoscopy room: standard FOB, autofluorescence bronchoscopy, endobronchial ultrasound guided FNA (actual cases, or videos), Lung Function Tests Lab, Sleep Study Lab.*

### Haematology

12 – 13 November 2011

Topics
Approach to patients with anemia
Update on myeloproliferative disease
Treatment of myelodysplastic syndrome
Latest advance on therapy for acute leukaemia
Workshop: cases discussion - patients with abnormal blood counts
Approach and treatment of bleeding tendency I - Platelet
Approach and treatment of bleeding tendency II - Coagulation
Workshop: patients with bleeding and clotting problems
Update on treatment of thrombophilia
Practical management of antithrombotic therapy
Workshop: cases discussion on thrombosis
Recent advance on treatment of lymphoma
Treatment of myeloma
Updates on immunoglobulin and plasma exchange therapy
Issues with blood products transfusion
Workshop: cases discussion - approach to patients with lymphadenopathy

*Clinical Attachment: OPD Haematology Clinic*

**Geriatrics**

25 - 26 February 2012

<b>Topics</b>
Introduction: ageing and geriatric services in Hong Kong
Dementia: diagnosis, differential diagnosis and management
Workshop: Interactive case discussion with illustration of cognitive assessment tools, lab test results. CT, MRI, PET & SPECT
Clinical approach: geriatric assessment in the elderly
Falls in the elderly
Gait disorder in the elderly
Workshop: interactive case discussion on urinary incontinence in the elderly. Urodynamics: illustration of common causes
Dizziness in the elderly
Workshop: interactive case discussion on dysphagia in the elderly with illustrations of VFSS assessment
Rehabilitation of the elderly
Drug use in the elderly
Pressure ulcer management
Nutrition in the elderly
Medical management for elderly living in old aged homes - infectious diseases
Medical management for elderly living in old aged homes - non-infectious diseases

*Clinical Attachment: Geriatrics Day Hospital***Clinical Pharmacology**

3 – 4 March 2012

<b>Topics</b>
Role of clinical pharmacology in modern therapeutics
Drug adverse effects and interactions that matter
Avoiding medication errors
When do drug levels matter and why?
Workshop: drug toxicity and overdose
Coping with new therapeutic claims: a common sense approach to evaluating clinical trial results
Contemporary drug prescribing for patients with diabetes, and obesity
The power of meta-analysis
Why and how to think of Number Needed to Treat (NNT)
Workshop: recent clinical trials / guidelines that have changed / challenged medical practice
Principles of drug prescribing at the extremes of age
Drug prescribing in children & during pregnancy
Workshop: drug therapy for community acquired MRSA infections
Modern management of hypertension and the metabolic syndrome
Workshop: drug therapy for Influenza
Infective endocarditis chemoprophylaxis: new guidelines

*Clinical Attachment: Therapeutic Round*

## Cardiology

21 – 22 April 2012

Topics
Hypertension guideline in practice
Practical guide for ECG interpretation
Current role of non-invasive and invasive cardiac imaging techniques
Practical approach on pre-operative cardiac assessment
Workshop: ECG workshop
Clinical approach to common cardiovascular symptoms
Heart murmur in adult: when would you like to take action?
Current management issues in stable angina
Recent advances in management of acute and chronic heart failure
Workshop: case based discussion on the management of hypertension, and shortness of breath
Latest advances on treatment of acute coronary syndrome
Management strategies for atrial fibrillation
Cardiac emergencies: acute pulmonary embolism, acute aortic diseases and hypertensive crisis
Managing cardiac arrhythmias: general principles of investigation and management
Workshop: case based discussion on the cardiac emergencies

*Clinical Attachment: Non-invasive assessment: treadmill, Holter, Echocardiogram / CCU round and cardiac cath lab visit: grand round in CCU and Cardiac Beds, Invasive procedures in cath lab*

## Endocrinology & Diabetes

7 – 8 July 2012

Topics
Diagnosis and monitoring of diabetes
Treatment modalities in diabetes
Management of diabetic complications
Special issues in diabetes management (sick day management, pregnancy etc)
Workshop: practical aspects of insulin therapy / assessment of diabetes complications
Biochemical and radiological evaluation of thyroid disorders
Diagnosis and management of common thyroid disorders (including thyroid nodules)
Complications of thyroid disease and Graves' ophthalmopathy
Management of thyroid disorders during pregnancy
Workshop: interpretations of thyroid function tests / effects of non-thyroidal drugs on thyroid function
Recent advances on treatment of osteoporosis and metabolic bone disease
Approach to manage male hypogonadism and erectile dysfunction
Approach to a patient with menstrual disorders
Secondary hypertension: diagnosis and treatment
Workshop: interpretation of bone mineral density tests

*Clinical Attachment: Diabetes Centre & Osteoporosis Centre*

**Medical Oncology**

29 – 30 September 2012

**Topics: concepts, lung, colon & hepatocellular cancer**

Concepts in targeted anti-cancer therapy

The management of early and advanced colorectal cancer patients

Advances in the management of lung cancer

Breakthroughs in the management of HCC

Interactive workshop: interesting cases in colon, lung and hepatocellular cancers

Molecular cancer biomarkers

The cutting edge in breast cancer treatment: from hormone, chemo to targeted therapy

Fertility issues in cancer patients

The application of PET-CT in oncology

Interactive workshop: utility of PET-CT in oncology

Advances in the treatment of Head &amp; Neck cancer

Medical emergencies in cancer

Radiotherapy: from LINAC, isotopes to radio-immunoconjugate

Palliative care

Interactive workshop: management of side-effect of RT

*Clinical Attachment: Medical Oncology Clinic / GI Oncology Clinic***Rheumatology**

17 – 18 November 2012

**Topics**

Approach to patients with rheumatic complaints

Investigation of patients with rheumatic complaints

Principles of drug treatment of rheumatic disorders

Immunology for rheumatology made easy

Case based workshop: easy guide to diagnosis, monitoring and treatment of systemic lupus erythematosus

The environment and rheumatic diseases

Fibromyalgia

Conventional and new treatment for gouty arthritis

Approach to low back pain in the primary care setting

Case based workshop: easy guide to diagnosis, monitoring and treatment of rheumatoid arthritis

Early onset rheumatic diseases

Dermatological manifestations of rheumatic diseases

Ophthalmological manifestations of rheumatic diseases

Special issues in the management of rheumatic diseases: vaccination, contraception, pregnancy counselling and pre-operative management and the rest

Workshop: rheumatology quiz

*Clinical Attachment: Rheumatology grand round / Rheumatology clinic*

## Neurology

19 – 20 January 2013

Topics
Approach to neurological diagnosis
Common movement disorders: diagnosis and management
Parkinson’s disease: diagnosis and management
Neurological investigations: EEG, EMG, NCV, imaging studies
Dizziness, impaired consciousness and epilepsy: diagnosis & management
Headaches & trigeminal neuralgia: diagnosis and management
Diagnosis and risk factors of stroke
Acute management of stroke
Stroke prevention
Neuro-intervention in ischaemic stroke
Interactive stroke cases illustration
Common CNS infections: diagnosis and management
Update on treatment of multiple sclerosis & demyelinating disorders
Approach to patients with myasthenia gravis, common neuropathies & myopathies
Neurorehabilitation
Workshop: 2 case-based discussion on the management of neurorehabilitation

*Clinical Attachment: Neurophysiology / Neurology Ward Round / Neurorehabilitation*

## Nephrology

9 – 10 March 2013

Topics
Treatment of specific renal diseases (I) - IgA nephropathy, renal vasculitis, anti-GBM disease
Acute renal failure – important causes, diagnosis, and management
Presenting features and investigations in renal medicine
Workshop: sodium and potassium disorders
Workshop: metabolic acidosis
Kidney transplantation – the basics
Management of the kidney transplant recipient
Treatment of specific renal diseases (II) – lupus nephritis, renal diseases in Sjogren’s syndrome, multiple myeloma, HUS/TTP
Drugs and the kidney
Workshop: case discussions – dialysis / renal transplantation
Dialysis as long-term renal replacement therapy
Chronic renal failure – complications and management
Workshop: case discussions – acute renal failure / glomerular diseases
Approach to tubulointerstitial diseases
Specific renal diseases (III) – minimal change disease, membranous nephropathy, focal segmental glomerulosclerosis, membranoproliferative glomerulonephritis

*Clinical Attachment: Renal Ward Round*

**Gastroenterology & Hepatology**

25 – 26 May 2013

<b>Topics</b>
Interpretation of liver function test
Workshop
Treatment of complications of cirrhosis
Screening and treatment for hepatocellular carcinoma
Treatment of chronic hepatitis B (I)
Treatment of chronic hepatitis B (II)
Workshop: case discussion - liver
Advances in therapeutic endoscopy procedures and imaging in GI tract
Management of irritable bowel syndrome
Gastric and colon cancer: screening, diagnosis and management
Treatment of helicobacter pylori and dyspepsia
Workshop: case discussion - case history of patients with dyspepsia, GERD, resistant Helicobacter pylori infection, etc.
Treatment of hepatitis C and other liver diseases
Fibroscan and liver diseases
Update on management of gastro-esophageal reflux disease
Workshop: case scenario - capsule endoscopy, double balloon enteroscopy, CT colonoscopy, etc. When, why and how?

*Clinical Attachment: Upper Endoscopy / GI Clinic / ERCP*

**Infectious Diseases and Medical Dermatology**

6 – 7 July 2013

<b>Topics</b>
Management approach to drug eruptions
Treatment of infections of the skin and soft tissues
Management of life-threatening dermatoses
Cutaneous manifestations of medical diseases: implication on treatment
Workshop: pictorial tour of common dermatoses
Diagnostic and therapeutic principles of infectious disease
Basic principles on infection control
Infectious diseases after international travel: diagnosis and treatment
Clinical approach to fever of unknown origin
Therapeutic approach to common infection of respiratory system
Update on HIV infection in Hong Kong
Treatment of infection of the GI tract: acute and chronic diarrhoea
Update on treatment of endocarditis and intravascular infections
Current therapy for urinary tract infection
Treatment of meningitis and central nervous system infection
Workshop: case based discussion

*Clinical Attachment: Dermatology Grand Round & Anti-biotic Round*

*"Nowadays, GPs can attend various kinds of CME lectures easily in different locations of HK free of charge. However, most of the CME lectures focus too much on pharmacological treatment, while neglecting the importance of non-pharmacological treatment in many clinical conditions like "fall prevention" (covered in geriatrics module) or the importance of arriving at differential diagnoses. ("DDx of chest pain" covered in cardiology modules). What's more, the topics of many CME lectures are commonly hypertension, hypercholesterolaemia, diabetes, etc, while many important topics like "interpretation of blood test results" or "reading CXR, ECG" are usually not covered in CME lectures but are covered in this diploma course.*

*Over the recent few years, there has been a marked increase in the number of patients with severe or complicated chronic diseases consulting GPs in HK, partly because of the long waiting list of SOPDs of HA, and partly because many pharmaceutical companies have begun to promote expensive medications to GPs. Gone are the days when GPs only need to be equipped with the ability to see patients with URTI or GE. This diploma course can help us to address such needs.*

*I highly recommend this course to all GPs."*

Dr Chan Hoi Chung Samuel

*"This refresher diploma course certainly equipped me with the state-of-art knowledge in internal medicine. It provides a comprehensive package comprising lectures, workshops, and clinical attachments for coping with my daily needs in general practice, especially in the arena of advances in treatment modalities. Workshops were particularly useful as the cases simulated common problems facing family physicians and general practitioners that they are sometimes not confident to deal with. Clinical attachments served as a demonstration of a link between primary care and specialist care through nicely chosen selection of teaching cases. After taking this course, I am more competent in dealing with more complex cases in internal medicine, particularly in cases where patients have been followed up by their specialists and come to seek for other opinions and information regarding their conditions and treatment modalities.*

*I have no hesitation in recommending this diploma course to all family physicians and general practitioners. I am sure it will empower you to practise more confidently with skills and knowledge acquired in this course."*

Dr Wu Chun Yu

*"This post-graduate diploma course consolidates my core concepts in internal medicine, and it provides me with up-to-date insights in the management issues on various diseases. Don't miss this course if you want to update your diagnostic and therapeutic skills in internal medicine!"*

Dr Lee Kin Wai

*"The course has helped me to catch up with the latest updates in clinical medicine and is supplemented with practical case illustrations which were relevant to my daily practice."*

Dr Frances Yu

*"I am a Family Physician working under HA. As one of the second batches of students of the postgraduate diploma in Diagnosis and Therapeutics in Internal Medicine, the most remarkable aspect of the programme was the dedication to primary care physicians. The curriculum adhered closely to the aims of updating diagnosis and treatment of commonly encountered problems in primary care. Self selected clinical attachments were very constructive and helped me understand what my patients would expect in secondary or tertiary health care. One of the most memorable visits included the fully equipped sleep study laboratory and the geriatric day care hospital. My tutor was very supportive and gave me much help in writing up my dissertation."*

Dr Judy Cheng

*"I strongly recommend the course to my colleagues as it's really practise oriented, and all the arrangement of the course is extremely excellent!"*

Dr Billy Chiu

## APPLICATION

### Application Procedure

Applications are invited for admission to the Postgraduate Diploma in Diagnosis and Therapeutics in Internal Medicine (PDipIntMed&Therapeutics)

To submit an application:

<http://www.hku.hk/acad/tpgonline/frontpage/welcome.htm>

### Enquiries:

Executive Officer

Tel : 2255-4607

Email : [medinfo@hku.hk](mailto:medinfo@hku.hk)

Website : [http://www.hku.hk/medicine/postdip\\_course.htm](http://www.hku.hk/medicine/postdip_course.htm)

Address : University Department of Medicine,  
Room 409, 4/F Professorial Block, Queen Mary Hospital,  
Pok Fu Lam, Hong Kong



THE UNIVERSITY OF HONG KONG  
LI KA SHING FACULTY OF MEDICINE

香港大學李嘉誠醫學院

# Diagnosis Therapeutics Intermedicine

**ORGANIZER**

Department of Medicine  
The University of Hong Kong  
Queen Mary Hospital, Hong Kong